

Maryland Farm Bureau  
3358 Davidsonville Rd.  
Davidsonville, MD 21035

Presorted Standard  
U.S. Postage Paid  
Permit #15  
Westminster, MD



# Chesapeake Bay Farm & Food

A Maryland Farm Bureau Publication

Fall 2016

# Chesapeake Bay Farm & Food

A Maryland Farm Bureau Publication

Fall 2016



## Maryland Farm Bureau 101<sup>st</sup> Annual Convention

The 101<sup>st</sup> annual meeting of the Maryland Farm Bureau will get underway in just a few days in Ocean City. More than 300 farmer delegates from across the state will gather to set our organization's policies and leadership for the year ahead.

Controversial debate over the impact of solar energy facilities and nutrient trading programs on the future of food production in MD is expected. Delegates are also anticipating discussion on funding to preserve our dairy farms and new strategies to reduce wildlife damage to crops.

The three-day convention will include educational seminars on firearms trusts, seed saving, solar energy and wildlife management. The young farmers and women's leadership programs will also include meetings, competitions and speakers.

Lyndy Phillips, a humorist with over 25 years of professional entertainment experience, will look at the importance of reducing stress. His keynote address "Laugh More Stress Less" is high energy and engaging.

See the full convention schedule on pages 4 & 5 and download the Maryland Farm Bureau convention app for all the convention details.

## "Field to Fork" Farm Tour Organized by Young Farmers

The Charles County Young Farmers organized the 2016 "Field to Fork" farm tour on October 3 for local officials, restaurants and the school system. The first stop was Hancock Family Farms in La Plata where David Hancock, Charles County Farm Bureau President, spoke about diversifying his family operation and the "local food lifestyle" in Charles County. The second stop on the tour was FALO Farm, an organic chicken and vegetable farm in La Plata owned and operated by Wes Valcarsel. FALO Food markets their farm-processed broilers raised in chicken "tractors" (pictured below) on pasture.

The third and final stop was Persistence Creek Farm in Faulkner. Kevin Warring, Chair of the Charles County Young Farmers, shared the many conservation practices that his operation uses in order to protect the environment. Lunch was provided at Persistence Creek Farm following the tour. The food was prepared by the Blue Dog Saloon using meat and produce from Charles County farms.

"We had a great turnout for our Field to Fork farm tour," said Kevin Warring. "We highlighted emerging businesses, discussed important policies, and fostered stronger relationships across our community."

Do you have a produce stand, winery, creamery, you-pick field or agri-tourism event on your farm? List your information in our Farm Bureau directory! All MFB members can be included for no cost and the information is available to the public. Call us at 410-922-3426 or email Katie Ward [kward@mdfarmbureau.com](mailto:kward@mdfarmbureau.com) to be added. We need your name, farm/business name, phone number, address, website and details about what you offer.



If you have a Christmas tree farm or holiday agri-tourism event on your farm, we are happy to promote it to our members in December! Email Katie Ward [kward@mdfarmbureau.com](mailto:kward@mdfarmbureau.com) a picture and address for your on-farm holiday activity.



Hancock Family Farms



FALO Farm



Persistence Creek Farm

### What's Inside?

- MFB Convention Intro, p.1
- Field to Fork Farm Tour, p.1
- Message from the President, p.2
- Farm Transition Planning Seminars, p.3
- Trans-Pacific Partnership Postcard, p.3
- MFB Convention Agenda, p.4
- MFB Convention Agenda, p.5
- Membership Benefits, p.6
- 2016 Membership Report, p.6
- Schedule of Events, p.7
- Sustainable Farming Infographics, p.7



[facebook.com/mdfarmbureau](https://facebook.com/mdfarmbureau)



[twitter.com/farmbureauumd](https://twitter.com/farmbureauumd)



[instagram.com/mdfarmbureau](https://instagram.com/mdfarmbureau)

## Maryland Farm Bureau Officers

Chuck Fry, President

Wayne Stafford, First Vice President

John Draper, Second Vice President

Valerie Connelly, Executive Director

## District Directors

### District 1

(Allegany, Frederick, Garrett, Washington)

Billy Bishoff

Larry Howard

### District 2

(Carroll, Howard, Montgomery)

Jason Myers

Paula Linthicum

### District 3

(Anne Arundel, Calvert, Charles,

Prince George's, St. Mary's)

Milly Welsh

James Raley, Jr.

### District 4

(Baltimore, Cecil, Harford)

Jonathan Quinn

William Amoss

### District 5

(Caroline, Kent, Queen Anne's, Talbot)

Harry Moreland, III

Tom Mason

### District 6

(Dorchester, Somerset, Wicomico, Worcester)

Bill Edwards

Eddie Johnson

## Women's Leadership Committee

Jennifer Cross, Chair

Prince George's County

## Young Farmers Committee

Jamie Tiralla, Chair

Calvert County

## Newsletter Editor

Katie Ward

kward@mdfarmbureau.com

410-922-3426 x 402

## A Message from the President

Dear Farm Bureau Member,

Did you know that Maryland is the 4<sup>th</sup> largest beneficiary state in the nation from the TPP? The Trans-Pacific Partnership Trade Agreement provides a huge boost for the export of "Made-in-America" farm products and technology through major ports. Here in Maryland, we have a world-class port in Baltimore, a tremendous high-tech corridor and agriculture is still our top industry.

Implementation of the TPP will increase cash receipts in MD by \$43 million and our net exports by \$19 million. Increased marketing opportunities for farmers will add at least 150 new jobs to the economy. Eliminating tariffs and other trade barriers to Maryland farm exports will increase trade for poultry, corn, soybeans, vegetables, processed foods and dairy. And our dairy industry can surely use a boost!

We are asking Congress to ratify the TPP before the end of the year. If it doesn't pass this year – during the "lame duck" session of Congress – the potential benefits could be lost forever. Failure to participate in the trade agreement could leave our farmers behind as the 11 other countries make agreements without us. Let your delegation in Washington know that this is huge by filling out the postcard to the right. Maryland farmers support TPP Now!

Sincerely,  
Charles E. Fry



## Upcoming Events

### December

12/3: Maryland Farm Bureau Young Farmers Retreat, Eastern Shore to Ocean City

12/4-6: Maryland Farm Bureau 101<sup>st</sup> Annual Convention, Ocean City

12/6: Carroll County Estate Planning Seminar, Carroll Extension Office, 9am - 2pm

12/13: Dorchester County Estate Planning Seminar, Eastern Shore Hospital Center, 8:30am - 3pm

### January

01/4: Caroline County Legislative Dinner, Caroline County 4-H Park

01/6-11: American Farm Bureau 98<sup>th</sup> Annual Convention, Phoenix, AZ

01/8: Harford County Legislative Dinner, The Bayou in Havre de Grace, 6pm

01/18: Montgomery County Estate Planning Seminar, Montgomery Extension Office, 9am - 2pm

01/19: Washington County Estate Planning Seminar, Washington Extension Office, 9am - 2pm

01/21: Women's Leadership Committee & Miss Maryland Ag Coordinator meeting, Davidsonville

01/24: St. Mary's County Estate Planning Seminar, St. Mary's Extension Office, 8:30am - 3:30 pm

### February

02/2: Taste of Maryland, Michael's Eighth Avenue, 6pm

02/8: Maryland Farm Bureau Day in Annapolis, Calvert House

02/9: MidAtlantic Women in Ag Conference, Dover Downs Hotel & Casino, 8am - 5pm

02/10-13: American Farm Bureau FUSION Conference, Pittsburgh, PA

02/20: GOAL Seminar, Maryland Farm Bureau Office, Davidsonville

02/24: Cecil County Estate Planning Seminar, Calvert Grange Hall, 8:30am - 3:30pm

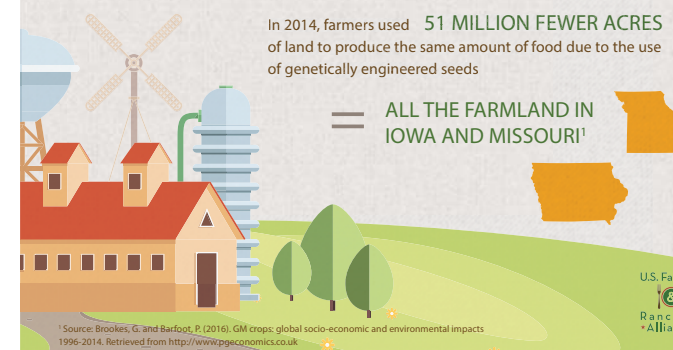
## Sustainability & Genetically Engineered Crops

### Did You Know?

Genetically engineered crops are plants whose genetic material has been altered to include DNA from other plants and bacteria.

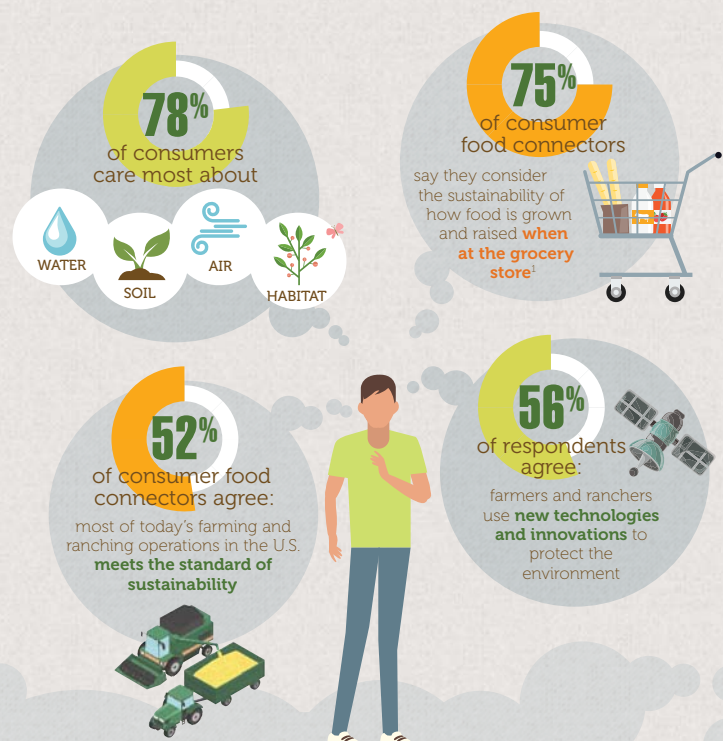
### These plants allow farmers to:

- Reduce soil erosion
- Save time and money
- Increase yields
- Protect the environment
- Reduce pesticide use and improve crop quality
- Grow more crops on the same amount of land



## CONSUMER PERCEPTIONS around Sustainability & Farming

USFRA conducted a consumer research study to determine perceptions around farming, ranching and sustainability



1 2015 survey conducted by The Trance Group of more than 1,000 consumers to understand their perceptions on the importance of sustainability in farming and ranching. Consumer Food Connectors, a group of well-educated individuals that are concerned with food issues and take the time and effort to communicate about those issues with others, to provide a sharper focus on the conversations about how food is grown and raised.

# Maryland Farm Bureau 101<sup>st</sup> Annual Convention

December 3-6, 2016

Clarion Resort Fontainebleau Hotel, Ocean City, MD

## Saturday, December 3, 2016

11:00am - 2:00pm	Young Farmer Committee Retreat - Pre Con Tour
7:00pm	Young Farmers - Own Your Own Dinner

## Sunday, December 4, 2016

8:30am - 9:30am	YF Achievement Award & Excellence in Ag Interviews
9:30am - 11:00am	Young Farmers' Committee Meeting <i>Sponsored by Perdue Agribusiness</i>
11:00am	YF Discussion Meet Orientation <i>(competitors only)</i>
11:30am - 12:00pm	YF First Round of Discussion Meet
12:00 noon	Exhibitors begin setting up displays
12:00 noon	Women's Hospitality Room
12:15pm	General Luncheon <i>Advanced reservation required</i>
1:00pm - 1:30pm	YF Second Round of Discussion Meet
1:30pm	Women's Leadership Committee Silent Auction
2:00pm - 4:30pm	Women's Leadership Committee Meeting <i>Sponsored by MARBIDCO</i>
2:30pm - 3:00pm	YF Final Round of Discussion Meet
3:00pm - 3:30pm	PAC Board Meeting
3:30pm - 5:00pm	Meet our Exhibitors - Cookies & Milk Reception in Exhibit Hall
5:00pm to 7:30pm	Dinner on Your Own
8:00pm	Dessert Reception <i>Sponsored by Nationwide Awards Sponsored by Delmarva Farmer</i>
9:00pm - 10:15pm	Pool Side President's Reception
9:00pm	Miss Maryland Agriculture program <i>(closed program)</i>

## Monday, December 5, 2016

7:00am	Continental Breakfast <i>Sponsored by Farm Credit</i>
8:30am	Opening Ceremonies of Annual Meeting <i>Floral Arrangements by Bell Nurseries</i>
8:35am	Roll Call of Delegates

8:50am	Address by MFB President
9:15am	Introduction of MFB Board of Directors
9:20am - 9:40am	Address by Ken Davis of Nationwide's Board of Directors
9:40am	Audit Report
10:00am	Address by Miss Maryland Agriculture Megan Millison
10:15am	Break
10:45am - 11:45am	Break Out Sessions - Round 1 Family Firearms Trusts Solar Energy Generation Legal Risks of Saving Seed
11:45am	Maryland Farms First - General Lunch <i>Sponsored by Growmark FS</i>
11:45am	County Presidents & GOAL Lunch
1:00pm	Delegates Reconvene
1:05pm	Nominations Committee Report
1:10pm - 2:00pm	Keynote Address Lyndy Phillips - <i>Laugh More, Stress Less</i>
2:10pm - 3:00pm	MFB Policy Resolutions Amendment Session
3:00 pm	Remarks from Dr. Craig Beyrouy Dean, UMD AGNR
3:15pm	LEAD Maryland Presentation
3:30pm - 4:30pm	Break Out Sessions - Round 2 Wildlife Management w/DNR Family Firearms Trusts More Effective Day in Annapolis
5:30pm	Reception <i>Sponsored by The Clarion Resort Hotel</i>
7:00pm	Annual Dinner & Awards Ceremony <i>Dinner sponsored by Nationwide Floral arrangements by Bell Nurseries</i>
8:30pm	Live Auction to benefit MFB Scholarship Fund
9:30pm	Freezin' for a Reason YF Fundraising Activity

## Tuesday, December 6, 2016

7:00am - 8:00am	Board of Directors Breakfast & Meeting <i>Sponsored by Eddie Mercer</i>
7:00am	Continental Breakfast in Exhibit Hall <i>Sponsored by Farm Credit</i>
8:15am - 9:15am	District Farm Bureau Caucus Meetings
9:30am	Delegates Reconvene
9:45am - 10:40am	MFB Policy Resolutions Amendment Session Continued
10:45am	Roll Call before Elections
10:50am	Election of Officers 1 <sup>st</sup> VP & 2 <sup>nd</sup> VP

11:15am	Address by the Hon. Joe Bartenfelder Secretary of Agriculture
12:00pm	Fair Farm Maryland - General Lunch <i>Sponsorship still available</i>
1:00pm	Hotel room checkout for all Farm Bureau conference attendees
1:30pm	Delegates Reconvene
1:40pm - 3:45pm	Policy Resolutions Session Continued
3:45pm	Finalize National & State Policy
3:50pm	Closing Remarks
4:00pm	Closing Motions & Adjournment

We will hold our annual live auction to benefit the MFB scholarship fund immediately following the awards banquet on Monday evening. Each county is invited to donate one item for the auction. All items will be part of the live auction.

To reduce the mortgage debt on the Davidsonville headquarters, we will auction off the opportunity to feature your farm in the entranceway to the building. The picture will be on display for one year and then moved to be permanently displayed in the Board of Directors meeting room - the Kent Room.

The Women's Leadership Committee will hold a silent auction on Sunday afternoon and through lunch on Monday to benefit the leadership development and education programs. County Women's Committees are invited to bring one item for the silent auction.



Download the FREE Maryland Farm Bureau app for more Convention details like exhibitors, sponsors, speakers and facility maps!



NEW Maryland Farm Bureau Membership Benefit



Maryland Farm Bureau members can now save up to 25% on Budget car rentals! Plus, get other great offers like dollars off, a free upgrade, or a free weekend day. Visit [www.budget.com/fb](http://www.budget.com/fb) or call 1-800-527-0700 to make a reservation.

Visit [www.mdfarmbureau.com/benefits](http://www.mdfarmbureau.com/benefits) to see all current discounts.

Nationwide Farm Transition/Estate Planning Series

Nationwide Insurance is presenting a series of one-day workshops throughout Maryland this fall and winter for family farmers interested in the components of a successful farm transition. Sessions will cover business and personal goal setting, financial analysis, human resources, family communications, estate planning, estate taxes and retirement planning. The Somerset session will also cover forestry planning issues.

“Research tells us that fewer than one-third of family businesses survive the transfer from one generation to the next,” said Paul Goeringer, extension legal specialist in the Department of Agricultural and Resource Economics. “These workshops will help farmers keep their families farming together.”

These workshops are hosted by the Department of Agricultural and Resource Economics, the Agriculture Law Education Initiative, Maryland Department of Agriculture, USDA-Risk Management Agency, University of Maryland Extension and Nationwide Insurance. The cost to attend is \$10 per person which includes lunch and all materials. Call the phone number listed next to each session to register.



Maryland Farm Bureau is offering five \$2,000 scholarships to high school seniors starting college in the fall of 2017 or full time college students at any community college or four-year institution. Applicants or their parents/guardians **MUST be members of Maryland Farm Bureau.**

Three of the scholarships will be offered to agricultural curriculum majors and two scholarships will be offered to non-agricultural curriculum majors. **Application deadline is February 1, 2017.** Visit [www.mdfarmbureau.com](http://www.mdfarmbureau.com) to fill out the application.

- Somerset County Extension Office: November 30, 8:30 am - 3 pm (410) 651-1350
- Carroll County Extension Office: December 6, 9 am - 2 pm (410) 386-2760
- Eastern Shore Hospital Center, Cambridge: December 13, 8:30 am - 3 pm (410) 228-8800
- Montgomery County Extension Office: January 18, 9 am - 2 pm (301) 590-9638
- Washington County Extension Office: January 19, 9 am - 2 pm (301) 791-1304
- St. Mary's County Extension Office: January 24, 8:30 am - 3:30 pm (301) 475-4482
- Calvert Grange Hall, Rising Sun: February 24, 8:30 am - 3:30 pm (410) 996-5280

County Farm Bureau Membership Report

(Based on Membership year July 1, 2016-June 1, 2017)

County Farm Bureau Membership Goals are based upon voting members, represented in the second column. The third column reports the total members paid, including both voting and associates.

If you need to renew your Farm Bureau membership, call 410-922-3426, ask your regional field representative for a form to mail in, or go online to [www.mdfarmbureau.com](http://www.mdfarmbureau.com).

Maryland Farm Bureau is pleased to announce that we made our state membership goal for 2016 and are considered an American Farm Bureau Quota state.



County	YTD Voting Members Paid	YTD All Members Paid
Allegany	20	45
Anne Arundel	142	1,285
Baltimore	54	1,741
Calvert	40	204
Caroline	74	179
Carroll	128	503
Cecil	71	267
Charles	33	355
Dorchester	41	176
Frederick	141	576
Garrett	36	68
Harford	63	516
Howard	38	394
Kent	42	73
Montgomery	61	1,306
Prince George's	38	901
Queen Anne's	43	153
St. Mary's	42	193
Somerset	28	80
Talbot	40	166
Washington	49	187
Wicomico	64	239
Worcester	37	142
<b>Maryland Totals</b>	<b>1,325</b>	<b>9,749</b>

The Asia Pacific region is a growth market for U.S. farm exports. The Trans-Pacific Partnership trade agreement will reduce or eliminate tariffs and help America's farmers and ranchers sell more of what's farmed in America to the TPP countries.

Please support American agriculture by supporting TPP.

[fbadvocacy.org](http://fbadvocacy.org)

**PLEASE SUPPORT TPP**

Take Action Now and Make Your Voice Heard on TPP.  
#TPPNow #FarmedInAmerica #DontFenceMeIn

Name: \_\_\_\_\_

Address: \_\_\_\_\_

City: \_\_\_\_\_ State: \_\_\_\_\_ Zip: \_\_\_\_\_

We will deliver your message to Congress:  
Mail your signed postcard to MFB at  
3358 Davidsonville Rd.  
Davidsonville, MD 21035